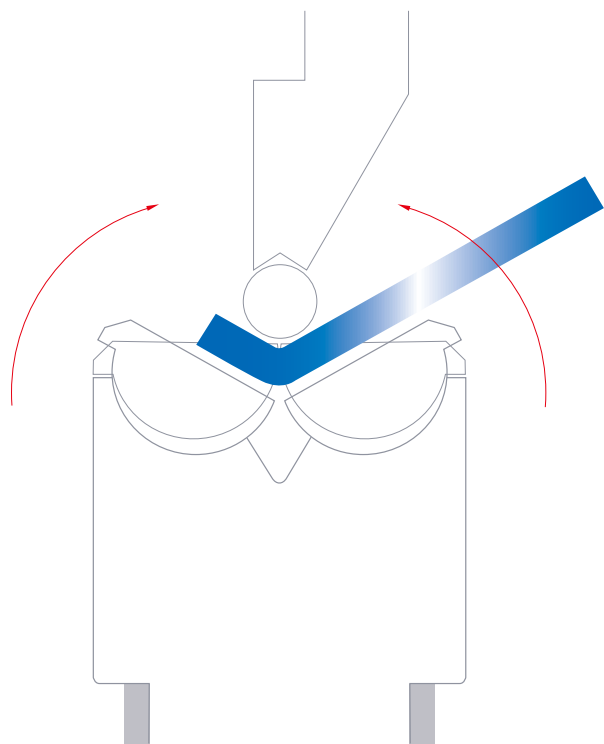


FOR THICK PLATE

# WING BEND



Keeping characteristics of conventional WING BEND  
Miracle thick plate processing

**Feature of Wing Bend** .....

- Wonderful correspondence for thick plate
- Mark free bending
- Non-transformed bending of near hole
- Wonderful short flange processing
- Beautiful R bending
- Wide processing plate thickness
- Reduction the die exchange number of times and equipment cost
- Correspondence to wide bending angle like obtuse angle~right angle~acute angle
- High accuracy bending

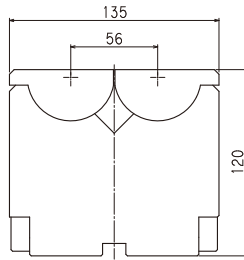


## WING BEND - Specifications

### WB1300

Supported workpiece thickness (mm) 6.5~13.0  
Resist pressure (kN/m) 3000

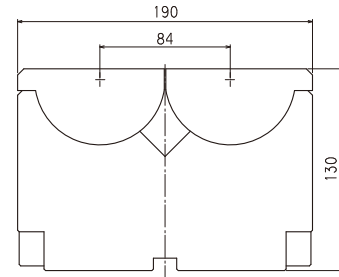
Model No.	Mold Length (mm)	Weight (kg)
WB1300-100	100	



### WB1800

Supported workpiece thickness (mm) 6.5~18.0  
Resist pressure (kN/m) 4000

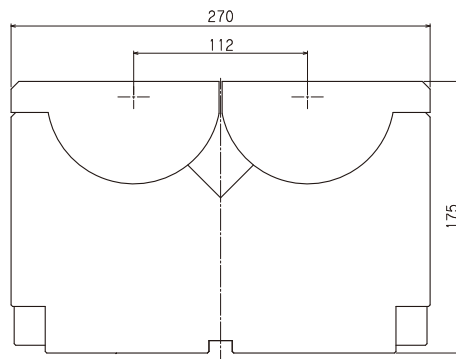
Model No.	Mold Length (mm)	Weight (kg)
WB1800-100	100	



### WB2500

Supported workpiece thickness (mm) 6.5~25.0  
Resist pressure (kN/m) 5500

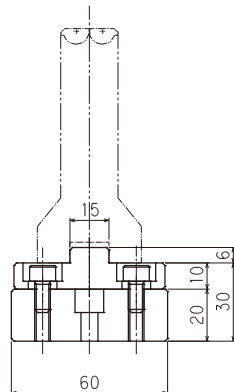
Model No.	Mold Length (mm)	Weight (kg)
WB2500-100	100	



## Accessory

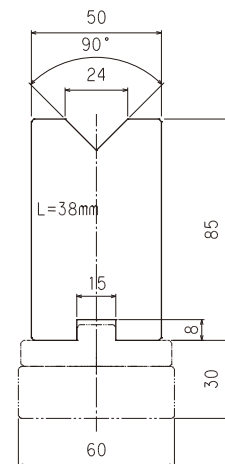
### Rail & Pleate (WB001)

Model No.	Rail Length (mm)	Weight (kg)
WB001-415	415	6
WB001-835	835	12.1

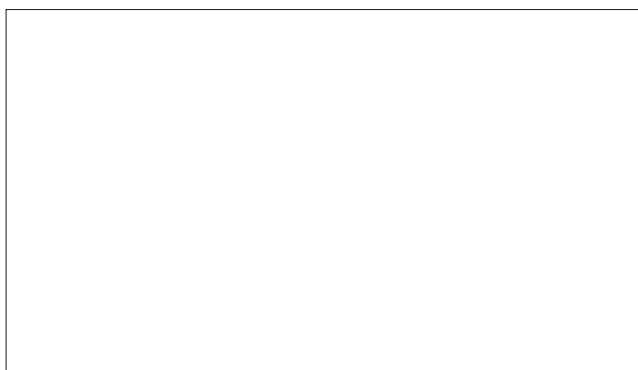


### Centering Jig (WB002)

Model No.	Jig Height (mm)	Weight (kg)
WB002-85	85	1.2




Please read very carefully bundled "Operator's manual" for the proper and safety usage of Wing Bend & Wing Bend Plus dies.



#### 【Distributor】

TSH INTERNATIONAL INC.  
134 Higashikata-Cho, Tsuzuki-Ku, Yokohama-City,  
Kanagawa-Pref., Post-Code 224-0045 JAPAN  
TEL: +81-45-507-4545 FAX: +81-45-624-9840  
URL <http://www.wingbend.com>

#### 【Maker】

 TOKYO SEIMITSU HATSUJO Co., Ltd.  
134 Higashikata-Cho, Tsuzuki-Ku, Yokohama-City,  
Kanagawa-Pref., Post-Code 224-0045 JAPAN  
TEL: +81-45-624-9841(Main) FAX: +81-45-624-9840  
URL <http://www.to-hatsu.co.jp>